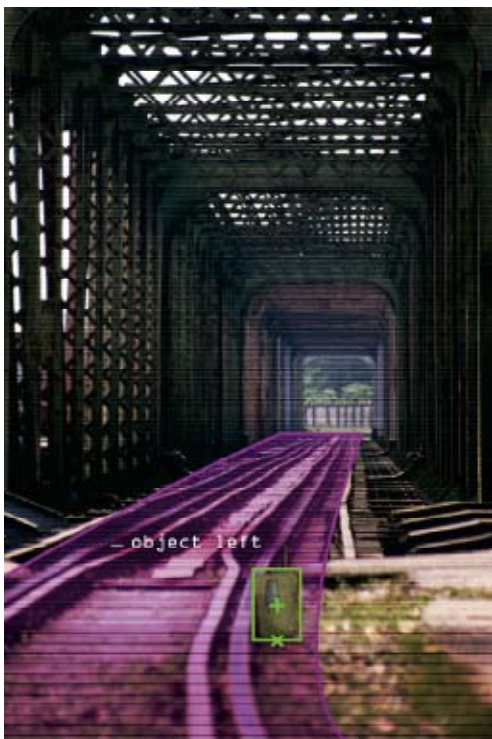


PETROLEUM & CHEMICALS

CUSTOMER: [Global Chemical Company](#)

CHALLENGE: [Secure busy chemical facility with railroad infrastructure](#)

RISKS: [Terrorist threats, environmental damage, operational continuity](#)



Using **ObjectVideo®** VEW's intelligent video surveillance, facility security personnel are able to set rules to monitor the flow of trains, objects and people into and around the campus.

SITUATION

A global manufacturer and distributor of chemical products, this client uses rail transportation to ship bulk and hazardous materials in and out of a major facility in North America. Railroad tracks run throughout the campus, exposing the facility to potential security risks where the rail enters and exits. As a result, the campus is divided into two parts with traditional perimeter security around each half. Additional security is required to monitor the railroad tracks, as well as, the many crossings that connect the campus. The external perimeter remains open to public rail traffic.

SOLUTION

ObjectVideo VEW was implemented to increase situational awareness at the chemical facility. By leveraging cameras, facility security personnel were able to virtually extend the physical fence where trains enter and exit the campus. Security staff use ObjectVideo VEW's intuitive rule creation interface to set rules that monitor the flow of trains, objects, and people into and around the campus. They are also able to set video tripwires at the openings in the perimeter fence, along the sides of the rail tracks and at each rail crossing to effectively mimic facility security policies. VEW identifies, classifies and tracks objects and people, then automatically detects activities that violate those rules, immediately notifying security personnel. Additionally, the VEW software monitors for loitering or unattended objects. As a result, ObjectVideo VEW discerns between normal activity, such as a train entering and leaving the facility and the unauthorized activity of a person or object attempting to enter the facility. VEW allows this busy chemical facility to improve situational awareness by providing proactive security for the exterior perimeter and interior gaps without impeding normal business operations. The end result is more efficient security, reduced expenses, and enhanced protection from unauthorized entry of people or vehicles that could penetrate or cause damage to the facility.